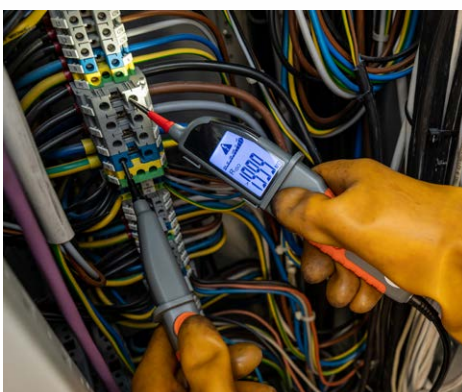




Handy in insulation resistance measurements

- **Insulation resistance measurement:**
 - » selectable measurement voltage: 250 V or 500 V,
 - » continuous indication of measured resistance,
 - » very long operation time with one set of batteries: **14 h** for measurement at $U_{ISO} = 250\text{ V}$, **11 h** for $U_{ISO} = 500\text{ V}$,
 - » automatic discharge of tested object's capacitance after measurement of insulation resistance,
 - » acoustic determination of 5 seconds time intervals that facilitates to take time characteristics during insulation resistance measurement,
 - » measurement current **up to 1.4 mA**,
 - » protection against measurement of live objects.
- **Low voltage resistance measurement in range of 0...1999 Ω:**
 - » measurement with current of <10 mA with resolution of 0,1 Ω,
 - » quick acoustic signalling for circuit resistance below 10 Ω.
- **AC/DC voltage measurement in range of 0...600 V:**
 - » automatic detection of voltage type (AC/DC).
- **Autoranging.**
- **Suitable for 50 Hz and 60 Hz network.**
- **Backlit LCD display.**
- **AUTO-OFF function.**
- **Built-in flashlight.**
- **Meter meets the requirements of the standard IEC 61557-1 and IEC 61557-2.**



The MIC-5 is a handy insulation resistance meter that any self-respecting electrician can sling around his neck like a doctor's stethoscope in order to always have it at hand. The instrument allows for simple and quick insulation evaluation, checking continuity of connections and measuring voltage on the object.



Technical specifications

Measurement functions	Measurement range	Display range	Resolution	Accuracy ±(% m.v. + digits)
AC/DC voltage	0 V...600 V	0 V...600 V	1 V	±(3% m.v. + 2 digits)
Insulation resistance				
Measuring voltage 250 V	250 kΩ...1000 MΩ acc. to IEC 61557-2	1 kΩ...1000 MΩ	from 1 kΩ	from ±(3% m.v. + 8 digits)
Measuring voltage 500 V	500 kΩ...1999 MΩ acc. to IEC 61557-2	1 kΩ...1999 MΩ	from 1 kΩ	from ±(3% m.v. + 8 digits)
Connection resistance measurement	0.0 Ω...1999 Ω	0.0 Ω...1999 Ω	from 0.1 Ω	±(4% m.v. + 3 digits)

Other technical data

Safety and work conditions

Measuring category according to EN 61010	IV 600 V, III 1000 V
Ingress protection	IP65
Type of insulation according to EN 61010-1 and IEC 61557	double
Power supply	2 x AAA 1.5 V battery 2 x NiMH AAA 1.2 V rechargeable battery
Dimensions	275 x 82 x 36 mm
Weight	338 g / 315 g
Operating temperature	0...+40°C
Storage temperature	-20...+70°C
Humidity	20...90%
Nominal temperature	23 ± 2°C
Reference humidity	40%...60%

Other information

Quality standard – development, design and production	ISO 9001
The product meets the EMC (emission for industrial environment) requirements according to standards	IEC 61326-1 IEC 61326-2-2

Standard accessories



Screw-in tips
Ø4 mm (4 pcs)

WAPOZN4MMK



Inserted caps
made of plastic
to limit the
length of the
tips of test
probes (2 pcs)

WAPOZO4MMK



2x AAA / LR03
alkaline battery



Declaration
of verification

Optional accessories



CS-1 cable
simulator

WAADACS1



CS-5kV cali-
bration box

WAADACS5KV



S-2 carry-
ing case

WAFUTS2